

An exciting new retail destination for North County Dublin.

Retail Opportunities



LUSK

VILLAGE QUARTER





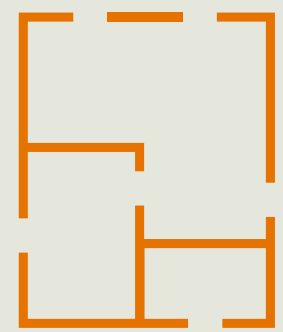
Introduction

Lusk Village Quarter offers the Lusk community first class retail space from local shops to a leading anchor supermarket with ample parking. Providing a new thriving shopping destination for Lusk and thus the surrounding area.

Life / Style

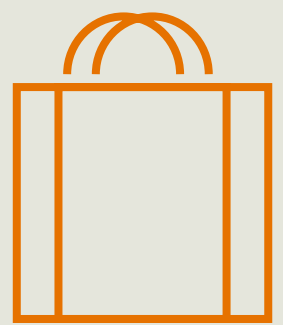


The Facts



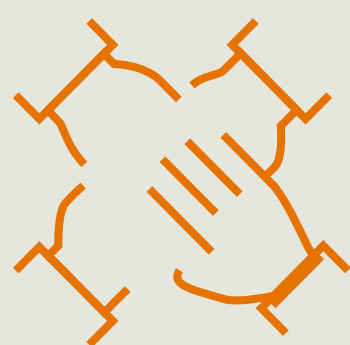
1,100 sq m

Initial phase of 1,100 sq m of retail and leisure space available in Lusk Village Quarter.



8

Initial phase of 8 available retail units



Community

Community led with 150 dwellings being delivered within the Village Quarter and another 200 in the wider Lusk area.

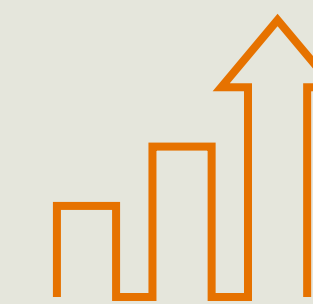


Anchored by a new 2,000 sq m Lidl store, Lusk Village Quarter will feature family homes, shops, cafes, a public square and two playgrounds.



32,348

Catchment of 32,348 adults over 16+ (B&A Research)



x4

The Lusk population has more than quadrupled in the last 20 years. (Fingal County Council)



49%

49% of population are ABC1 social class. (B&A Research)



The Location



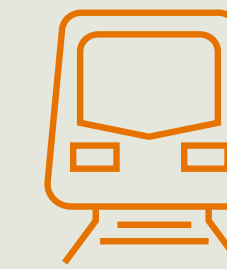
Superbly located retail and leisure destination in **Fingal**, North of Dublin City Centre.



New **mixed-use development** which will create a new thriving town centre for Lusk.



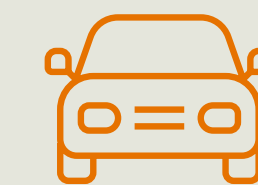
Fingal County Council is the **fastest growing county in the country**, demonstrating 8.1% growth between 2011 – 2016. This year, the population is expected to have risen to over 330,000. *(CSO, 2016)*



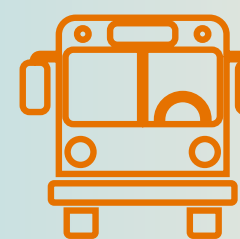
Rush & Lusk Train Station is located only a mile away. It sees weekly (5 day) north and south bound boardings and alightings of 7,000 passengers. *(NTA Census Report, 2019)*



Excellent rail, road and bus connections via Irish Rail.



Short drive from the M1, M50 and Dublin Airport.



8 Bus routes within walking distance of the Village Quarter offers an easy commute to Lusk via Dublin Bus & Fingal Express.



An impressive network of **cycle ways** and **green routes**.

LUSK VILLAGE QUARTER
Future shops, cafés and public amenities



LUSK TOWER

Rathmore Roundabout

Skerries Road

FUTURE HOUSES

FUTURE HOUSES

LUSK UTD CLUB

PLAYING FIELDS

FUTURE HOUSES

EXISTING & FUTURE HOUSES

PRIMARY SCHOOL

SECONDARY SCHOOL

EXISTING & FUTURE HOUSES

Raheny Roundabout

FUTURE HOUSES

FUTURE HOUSES

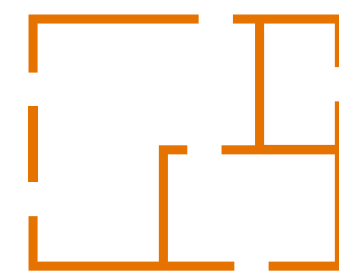
Station Road

Rathmore Road

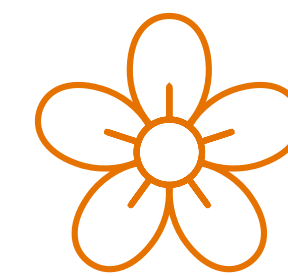
Remount Roundabout



The Scheme



Initial phase of 1,100 sq.m
of retail and leisure space



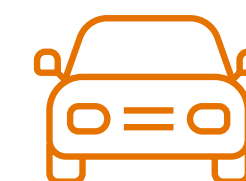
Open air **public square**
for shoppers and the
community



Catchment of
32,348 adults over 16+
(B&A Research)



Community led with **150**
dwellings being delivered within
the Village Quarter and another
200 in the wider Lusk area

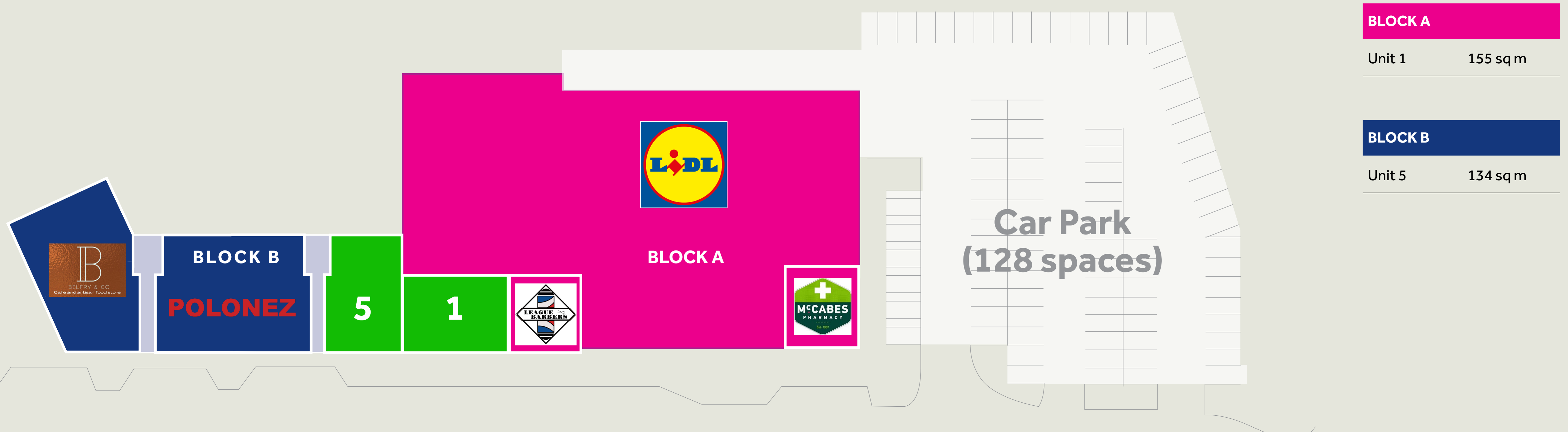
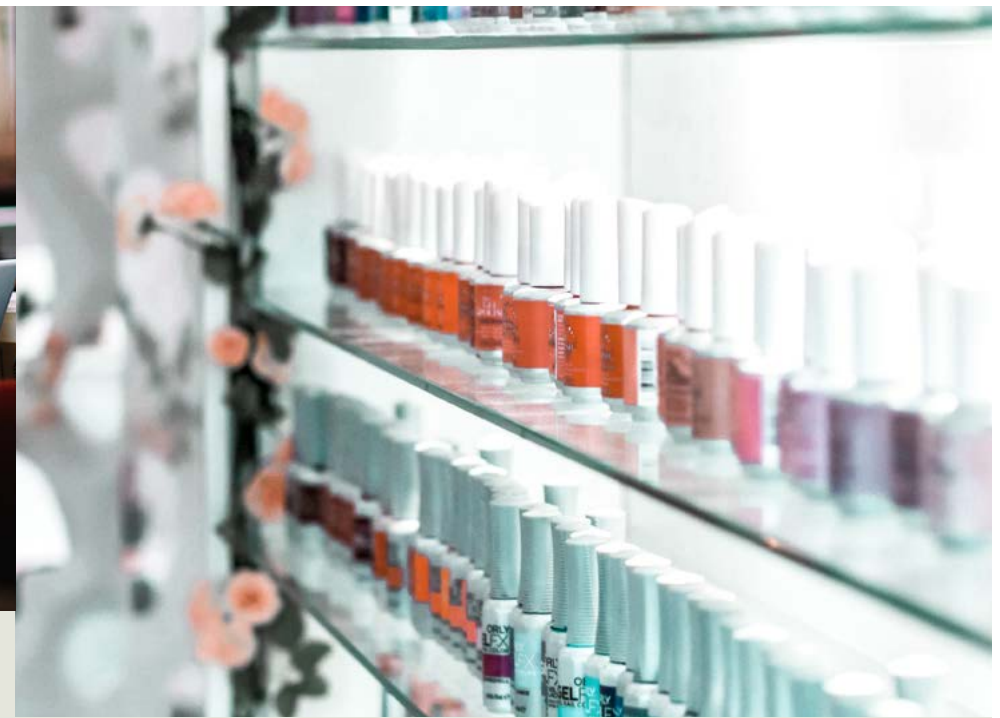


128 car parking
spaces available



Ample **bike spaces**

Schedule of Areas

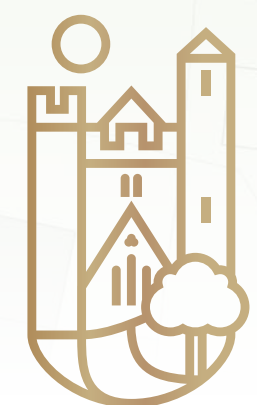
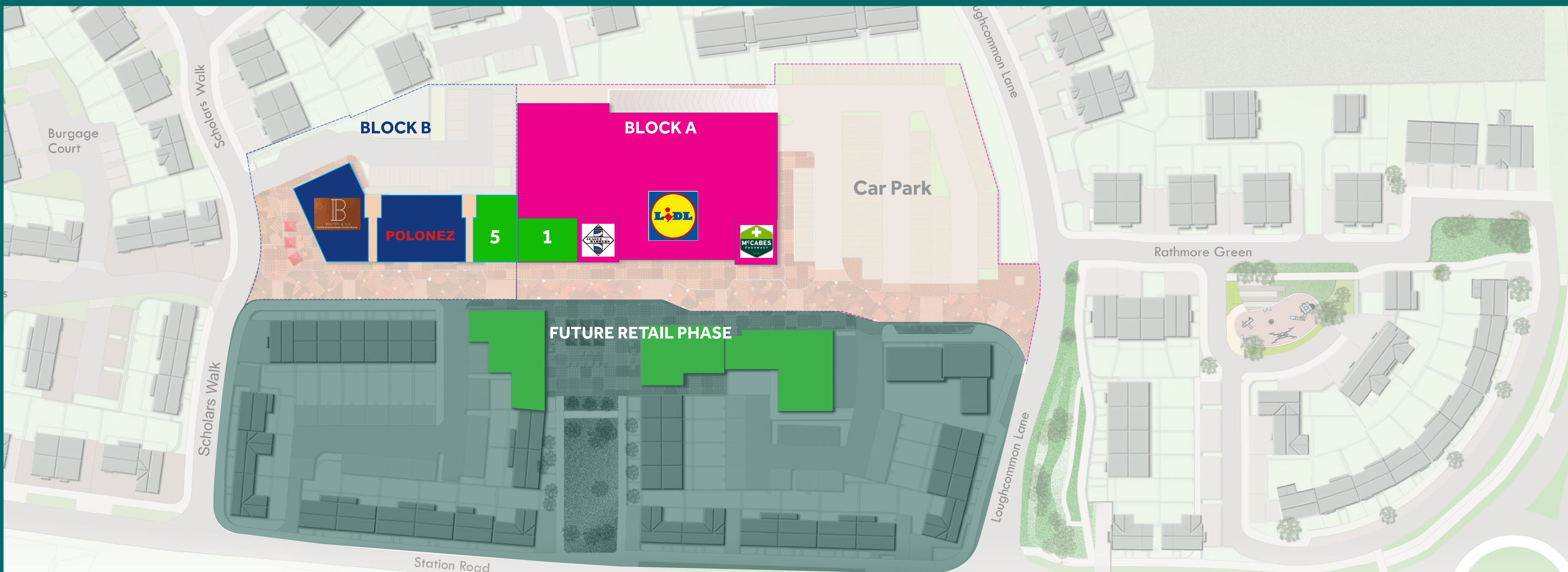


BLOCK A

Unit 1 155 sq m

BLOCK B

Unit 5 134 sq m



LUSK
VILLAGE QUARTER

Masterplan



LUSK
VILLAGE QUARTER

Life / Style

RETAIL AGENTS:



James Quinlan

Email: jquinlan@bannon.ie

Tel: +353 (1) 6477900

PSR: 001830-002130

Daniel Murphy

Email: dmurphy@bannon.ie

Tel: +353 (1) 6477900

PSR: 001830-007723

Ali O'Gorman

Email: aogorman@bannon.ie

Tel: +353 (1) 6477900

PSR: 001830-009855

A DEVELOPMENT BY:



Disclaimer: These particulars are issued by Bannon on the understanding that any negotiations relating to the property are conducted through them. While every care is taken in preparing them, Bannon, for themselves and for the vendor/lessor whose agents they are, give notice that: (a) The particulars are set out as a general outline for guiding potential purchasers/tenants and do not constitute any part of an offer or contract. (b) Any representation including descriptions, dimensions, references to condition, permissions or licences for use or occupation, access and any other details are given in good faith and are believed to be correct, but any intending purchaser or tenant should not rely on them as statements or representations of fact but must satisfy themselves (at their own expense) as to their correctness. (c) Neither Bannon nor any of its employees have any authority to make or give any representations or warranty in relation to the property. All maps are produced by permission of the Ordnance Survey Ireland Licence No. AU00470011 - Government of Ireland. PSRA Licence No. 001830.